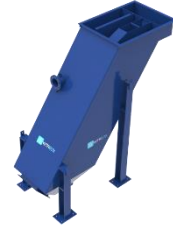


JMS-Slant Plate Clarifier Spec Sheet

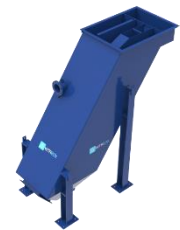
JMS-75

Dimensions	4'4"W x 7'3"L x 6'H
Influent SS 600mg/l @ 0.20Gal/proj.sq.ft. based upon solids settling at a minimum rate of 12-14 feet per hour.	20 GPM
Projected Surface Area	78 sq ft
Solution Volume	300 Gallons



JMS-125

Dimensions	4'6"W x 10'L x 10'3"H
Influent SS 600mg/l @ 0.20Gal/proj.sq.ft. based upon solids settling at a minimum rate of 12-14 feet per hour.	30 GPM
Projected Surface Area	156 sq ft
Solution Volume	700 Gallons



JMS-250

Dimensions	6'5"W x 10'10"L x 11'11"H
Influent SS 600mg/l @ 0.20Gal/proj.sq.ft. based upon solids settling at a minimum rate of 12-14 feet per hour.	60 GPM
Projected Surface Area	312 sq ft
Solution Volume	1200 Gallons



JMS-350

Dimensions	6'5"W x 10'10"L x 11'11"H
Influent SS 600mg/l @ 0.20Gal/proj.sq.ft. based upon solids settling at a minimum rate of 12-14 feet per hour.	70 GPM
Projected Surface Area	367 sq ft
Solution Volume	1500 Gallons



JMS-500

Dimensions	6'5"W x 12'9"L x 12'H
Influent SS 600mg/l @ 0.20Gal/proj.sq.ft. based upon solids settling at a minimum rate of 12-14 feet per hour.	100 GPM
Projected Surface Area	532 sq ft
Solution Volume	2600 Gallons



JMS-Slant Plate Clarifier Spec Sheet

JMS-600

Dimensions	6'5"W x 13'8"L x 12'H
Influent SS 600mg/l @ 0.20Gal/proj.sq.ft. based upon solids settling at a minimum rate of 12-14 feet per hour.	120 GPM
Projected Surface Area	606 sq ft
Solution Volume	3000 Gallons



JMS-750

Dimensions	9'9"W x 12'9"L x 11'11"H
Influent SS 600mg/l @ 0.20Gal/proj.sq.ft. based upon solids settling at a minimum rate of 12-14 feet per hour.	160 GPM
Projected Surface Area	800 sq ft
Solution Volume	3800 Gallons

